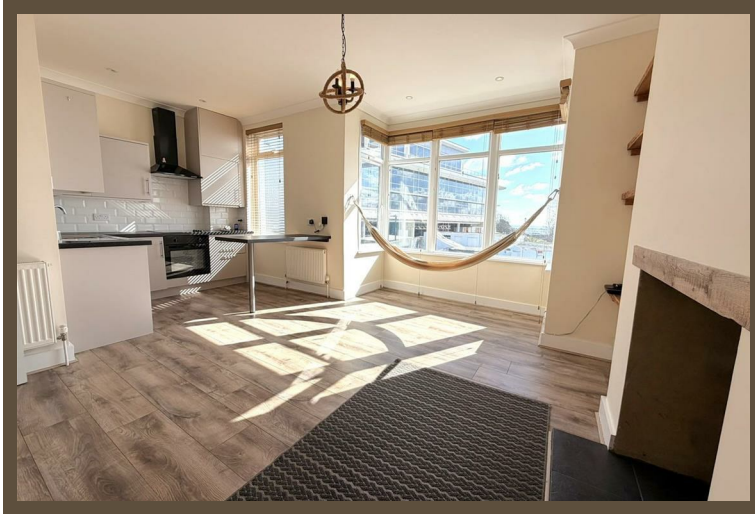


SCOTT &  
STAPLETON

SAN REMO PARADE  
Westcliff-On-Sea, SS0 7RD  
£1,500 PCM







## **SAN REMO PARADE**

**WESTCLIFF-ON-SEA, SS0 7RD**

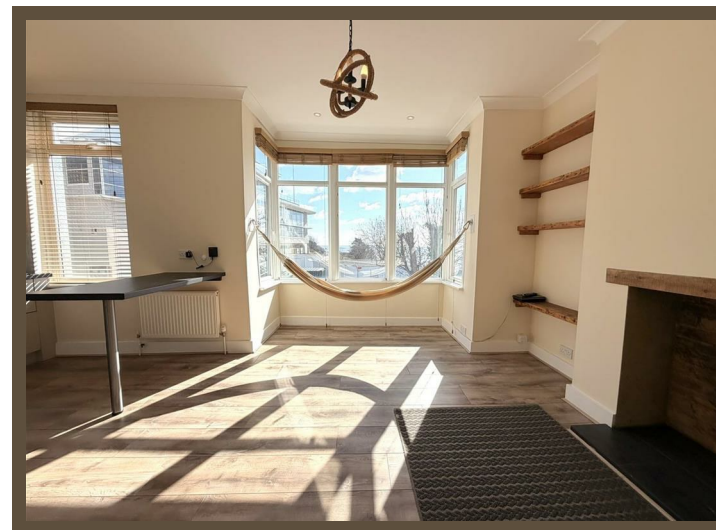
**£1,500**

**pcm**

Scott & Stapleton are pleased to offer this beautifully presented two-bedroom first floor rental property offering a perfect blend of comfort, style, and coastal charm.

Both bedrooms are generously sized, providing plenty of natural light and space for relaxation. The heart of the home is the open-plan lounge and kitchen area, designed for modern living—ideal for unwinding after a long day.

Offered unfurnished and ready immediately this property combines practical living with a desirable seaside lifestyle.



## Entrance

Communal door. Stairs leading to first floor.

## Hallway

Laminate flooring. Doors to all rooms. Window to side elevation. Radiator. Coat hangers. Smooth painted ceiling.

## Kitchen/Lounge

Laminate flooring. Radiators. Shelving. Windows to front elevation. Modern fitted kitchen with integrated electric hob, oven, washing machine and fridge. Wall mounted hammock. Smooth painted ceiling. Spotlights and hanging light.

## Bedroom 1

Fitted carpet. Window to rear elevation. Smooth painted walls and ceiling.

## Shower Room

Three piece suite comprising low level WC, wall mounted sink and walk in shower cubicle. Partly tiled walls. Window to side elevation. Spotlights.

## Bedroom 2

Fitted carpet. Bay window to rear elevation. Smooth painted walls and ceiling.



Energy Efficiency Rating		Current	Potential
Very energy efficient - lower running costs			
(92 plus) A			
(81-91) B			
(69-80) C			
(55-68) D			
(39-54) E			
(21-38) F			
(1-20) G			
Not energy efficient - higher running costs			
England & Wales	EU Directive 2002/91/EC		

Environmental Impact (CO <sub>2</sub> ) Rating		Current	Potential
Very environmentally friendly - lower CO <sub>2</sub> emissions			
(92 plus) A			
(81-91) B			
(69-80) C			
(55-68) D			
(39-54) E			
(21-38) F			
(1-20) G			
Not environmentally friendly - higher CO <sub>2</sub> emissions			
England & Wales	EU Directive 2002/91/EC		